



film_eu

toolkit



UNIVERSIDADE
LUSÓFONA

LUCA
SCHOOL
OF
ARTS



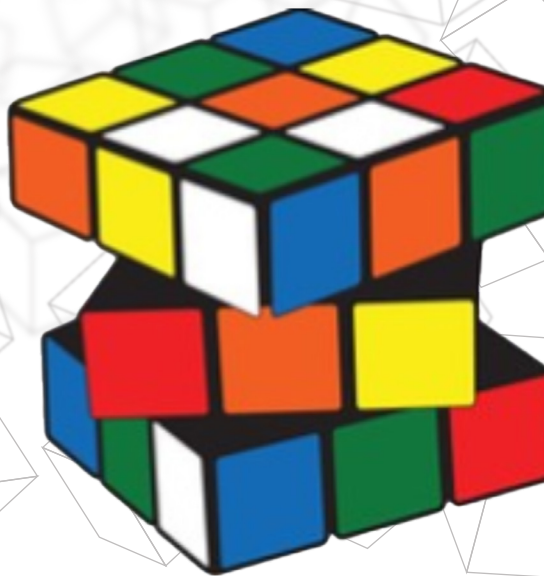
TALLINN UNIVERSITY
Baltic Film, Media and
Arts School

**Institute of
Art, Design +
Technology
Dún Laoghaire**

WELCOME TO THE TOOLKIT

The FilmEU Toolkit was conceived as an **internal and external** dissemination and knowledge transfer tool to be produced towards the end of the first E+ funding period (2020-2023).

The toolkit aggregates all our outcomes into a single tool in view of knowledge transfer and innovation

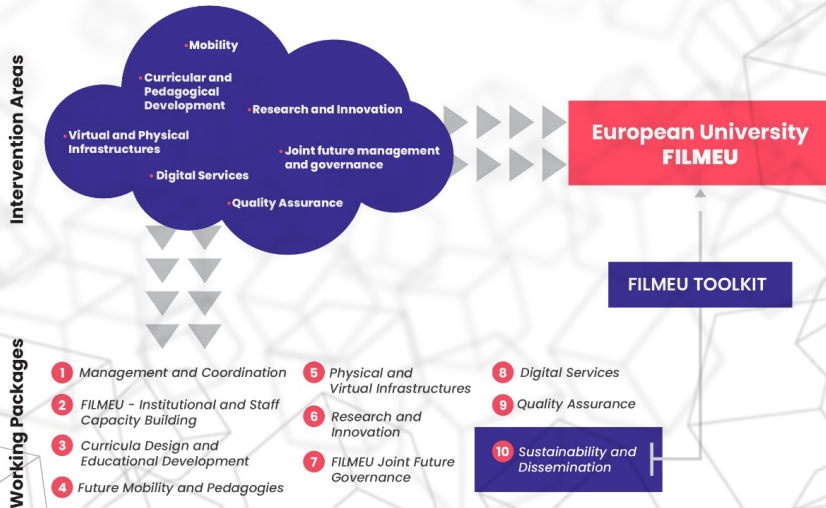


Objectives and needs

- a. The integration of the achievements of all Task Forces/ work packages within FilmEU towards the design and piloting of several solutions that promote and facilitate the needed jointness upon which a European University must be built;
- b. The presentation, in a transferable format, of the main lessons learnt in this piloting stage in view of coming up with a template and guidelines on “how to” foster the intensive and wide cooperation between higher education institutions that underpins what a “European University” is;
- c. The definition of a model for the actual implementation of all defined activities that will support the concretization in the future of the European University FilmEU and its enlargement.

The approach

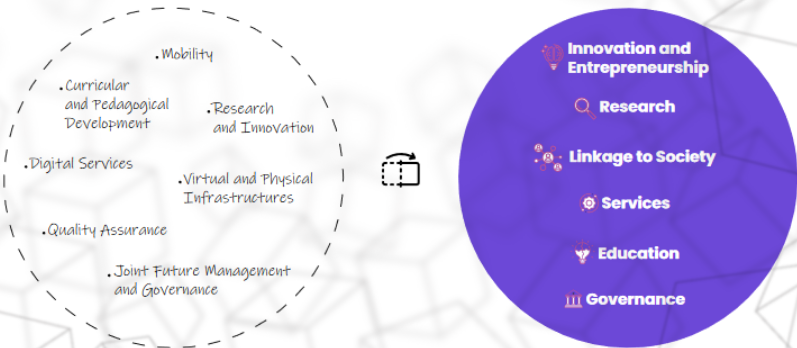
The starting point were the “Areas of intervention” defined under FilmEU and the work that was conducted across all work packages in the last three years.



Guidelines for innovation and transformation

Approach

We then moved on to identify the core areas of intervention that resulted from our pilot stage



Approach

Area of Intervention

INNOVATION AND ENTREPRENEURSHIP

Components

JOINT PROCUREMENT
IP MANAGEMENT
CURRICULUM INNOVATION
LLL
DIGITAL SERVICES
JOINT INFRASTRUCTURES
INCUBATOR
MOBILITY
INDUSTRY COLLABORATIONS

Building Blocks

JOINT PROCUREMENT - INNOVATION
IP MANAGEMENT
HARMONISATION OF CURRICULUM
CAPACITATION OF ENTREPRENEURIAL COMPONENT
ENTREPRENEURIAL ENGAGEMENT THROUGH TEMPLATES OF MODULES ON PLATFORM
MICRO-CREDENTIAL
DIGITISATION OF MOBILITY
FEDERATION
LAB DEVELOPMENT
INCUBATOR
FOSTER INNOVATION AND ENTREPRENEURSHIP
INCUBATOR
PROMOTE RESEARCHERS MOBILITY
SOFTWARE INDUSTRY COLLABORATIONS



Each area of intervention has several components (the integrative parts that ensure impact) and each component has several building blocks (the actional elements)

Approach

Area of Intervention **RESEARCH**

Components

JOINT SCIENTIFIC EVENTS
JOINT FUNDING AND PROJECT APPLICATION
PHD EDUCATION
JOINT PUBLICATIONS
JOINT RESEARCH AGENDA
RESEARCH FIELDS
RESEARCHERS
MOBILITY
RESEARCH QA

Building Blocks

EVENT MANAGEMENT
COLLABORATIVE PROJECT WRITING
DESIGN A JOINT PHD
DESIGN AND IMPLEMENTATION OF A REGULAR DOCTORAL SEMINAR CYCLE (DOCTUS)
ORGANISE DOCTORAL SUMMER SCHOOL
PHD SUPERVISION MODELS
DISSEMINATION OF RESEARCH WORK IN PUBLIC PLATFORMS
JOINT RESEARCH AGENDA
MAPPING RESEARCH EXPERTISE FIELDS OF SPECIALISATION
ORGANISE ONLINE MATCHING EVENT
MAPPING OF INSTITUTIONAL RESEARCH TALENT (POTENTIAL AND DIVERSITY)
AND PROMOTE AND NURTURE RESEARCH HUB
MOBILITY PROCEDURES HARMONIZATION
JOINT RESEARCH QA PROCESSES



Each area of intervention has several components (the integrative parts that ensure impact) and each component has several building blocks (the actional elements)

Approach

Area of Intervention **LINKAGE TO SOCIETY**

Components

PARTNERSHIPS
QUALITY
REPORTING
DISSEMINATION
RESEARCH DISSEMINATION
JOINT EVENTS
ASSOCIATED PARTNERS
CHALLENGES
COMMUNICATION

Building Blocks

RESEARCH IN PARTNERSHIP WITH OTHER PUBLIC AND PRIVATE INSTITUTIONS
QA TOOLS (SURVEY-FOCUS/TALK-QUESTIONNAIRE-ET AL...)
DISSEMINATION
DISSEMINATION OF RESEARCH WORK IN PUBLIC PLATFORMS
EVENT MANAGEMENT
ASSOCIATED PARTNERS
CREATE LINKS BETWEEN LEARNING AND PREDOMINANT SOCIETAL DEBATES
IMPACT & OUTREACH

Each area of intervention has several components (the integrative parts that ensure impact) and each component has several building blocks (the actional elements)



Approach

Area of Intervention **SERVICES**

Components

JOINT EVENTS
DIGITAL SERVICES
QUALITY
REPORTING
JOINT INFRASTRUCTURES
PRODUCTION SERVICES
COMMUNICATION
MOBILITY
LEARNING SERVICES

Building Blocks

EVENT MANAGEMENT
AUDIT PROCESS
PORTAL DESIGN
FEDERATION
HOW TO CREATE A FUNCTIONING FILMEU MEDIATEQUE
DISSEMINATION
IMPACT & OUTREACH
LAB DEVELOPMENT
EVENT MANAGEMENT
QA TOOLS (SURVEY-FOCUSTALK-QUESTIONNAIRE-ET AL...)
EVENT MANAGEMENT
INNOVATIVE MOBILITY DESIGN
HARMONISATION OF ISSUED DOCUMENTS
A FILMEU MOBILITY ECOSYSTEM
RESEARCH IN PARTNERSHIP WITH OTHER PUBLIC AND PRIVATE INSTITUTIONS



Each area of intervention has several components (the integrative parts that ensure impact) and each component has several building blocks (the actional elements)

Approach

Area of Intervention

EDUCATION

Components

PEDAGOGICAL INNOVATION -
IMPLEMENTATION SAMSARA MODEL
MOBILITY
STUDENTS
PROGRAM RECOGNITION (AUTOMATIC RECOGNITION)
DIVERSITY, EQUALITY AND INCLUSION
JOINT EDUCATION OFFERS LIFE LONG LEARNING
TEACHERS
JOINT EDUCATIONAL OFFER
JOINT EDUCATIONAL QA PROCESSES

Building Blocks

MAP AND IMPLEMENT BEST PEDAGOGICAL PRACTICES
DESIGN AND IMPLEMENT JOINT CURRICULAR UNITS (PILOT)
HARMONISE PEDAGOGICAL METHODOLOGIES (PILOT)
DESIGN MOBILITIES THAT PROMOTE LEARNING
MOBILITY PROCEDURES HARMONIZATION
MOBILITY IN LIFE LONG LEARNING
STUDENT RECRUITMENT AND SELECTION
SYSTEMATISE AND SYNCHRONISE THE STUDENT'S ACADEMIC ASSESSMENT (STUDENT'S GRADING)
HARMONISATION OF CURRICULUM
FILMEU STUDENT WALLET
DRAW AND IMPLEMENT DIVERSITY, EQUITY AND INCLUSION POLICIES
MICRO CREDENTIAL
HARMONISE AND PROMOTE TEACHERS CONTINUOUS TRAINING
??WRITING ERASMUS+ DESIGN MEASURE??
??DESIGN MEASURES FOR EMJM??
EMJM FUNDING
JOINT POSTGRADUATE DEVELOPMENT
JOINT EDUCATIONAL QA PROCESSES



Each area of intervention has several components (the integrative parts that ensure impact) and each component has several building blocks (the actional elements)

Approach

Area of Intervention GOVERNANCE

Components

HR
JOINT PROCUREMENT
STRATEGY
ENLARGEMENT
JOINT AGREEMENT
QUALITY FRAMEWORK
BUDGET
INTERNATIONALISATION PROCEDURES
MANAGEMENT

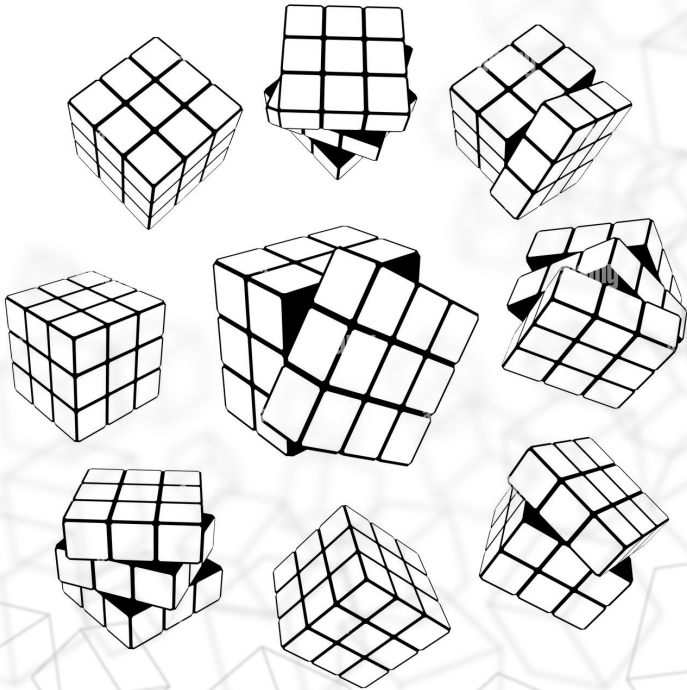
Building Blocks

DELINEATE AND IMPLEMENT A SUSTAINABLE TENURE TRACK
JOINT PROCUREMENT
ALLIANCE STRATEGY
ALLIANCE ENLARGEMENT
ASSOCIATION ENLARGEMENT
NEW PARTNER ONBOARDING
ALLIANCE IOR CAPACITATION
JOINT QUALITY FRAMEWORK
ALLIANCE BUDGETING
INTERNATIONALISATION PROCEDURES HARMONIZATION
ALLIANCE GOVERNANCE AND MANAGEMENT MODEL



Each area of intervention has several components (the integrative parts that ensure impact) and each component has several building blocks (the actional elements)

Rubik's Cube - Toolkit



LEARNING PURPOSES

explaining what are the constituent elements of a European University and how to operate them

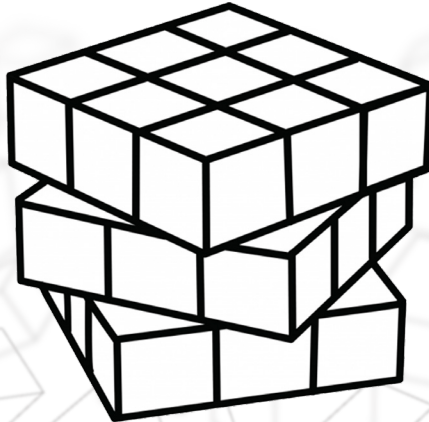
PLAYFUL EXPLORATION

allowing experimentation and ludic exploration of the different dimensions FilmEU is made of

Concept

Playing with the 6 colored faces and,
for every face, 9 components of the Rubik's cube

Each face of the cube is one
foundational element of our
University's mission - the six areas
of intervention



Each component in each face of the
cube is a transformational module one
uses in view of reaching a desired
state.



Concept – the cube

The toolkit is organized in the following manner

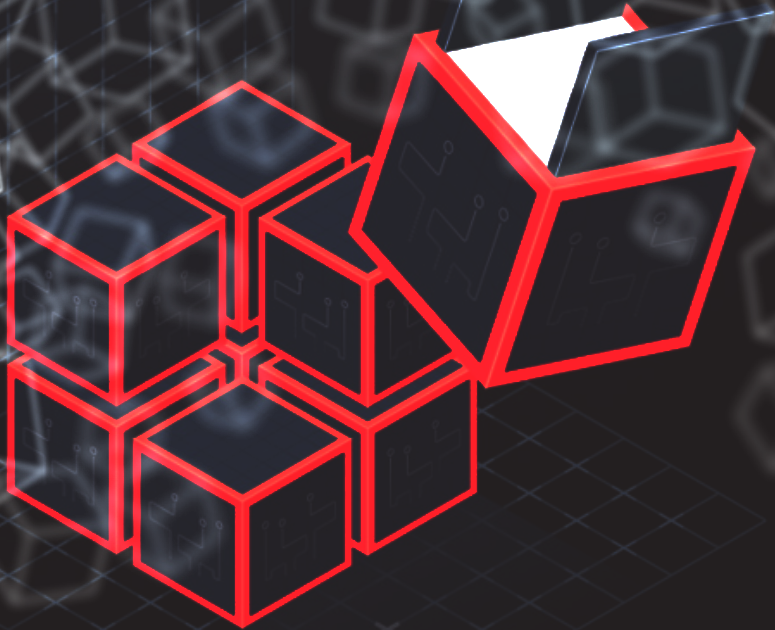
Each face of the cube is one foundational element of our University's mission - the six areas of intervention;

Each component in each face of the cube is a transformational module one uses in view of reaching a desired state;

Each component is made up of building blocks that are the actions undertaken under each component.



Defining a component and the building blocks





Every building block* is characterized by:

Reusability Reusability. They are designed to plug into a variety of constellations without the need for modification or special accommodations.

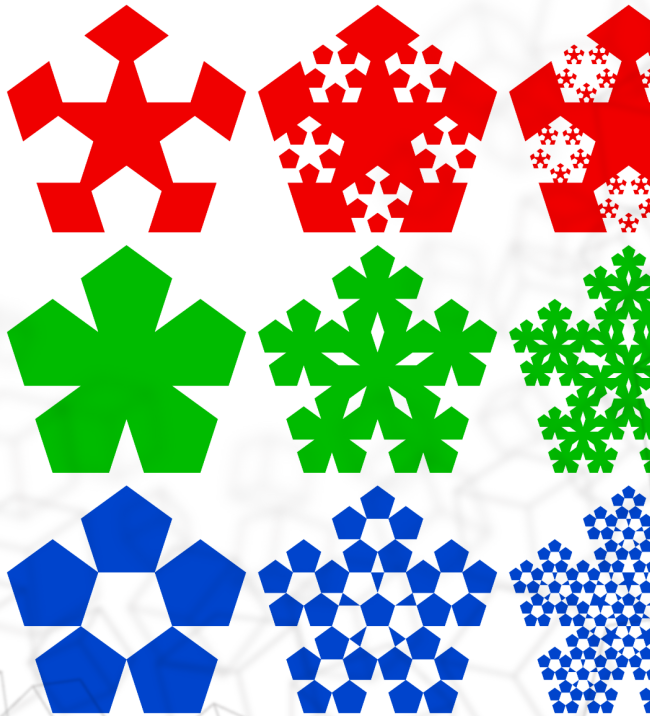
Extensibility. A building block can be combined with others to create new behaviors.

Replaceability. Building block with similar functionality (shape) can be swapped.

Encapsulation. Building block are self-contained and expose functionality through interfaces while hiding the details of internal processes.

Independence. Building blocks have minimal dependencies on other building blocks and can operate in different environments and contexts.

Selection of building blocks



Define on a reasonable scale

We are not going to disentangle the European University on a nano scale

Areas of Intervention

It is possible that one building block can contribute to different components and areas of intervention.

Building the building blocks

Step 1 Every Taskforce defined which building blocks to work out

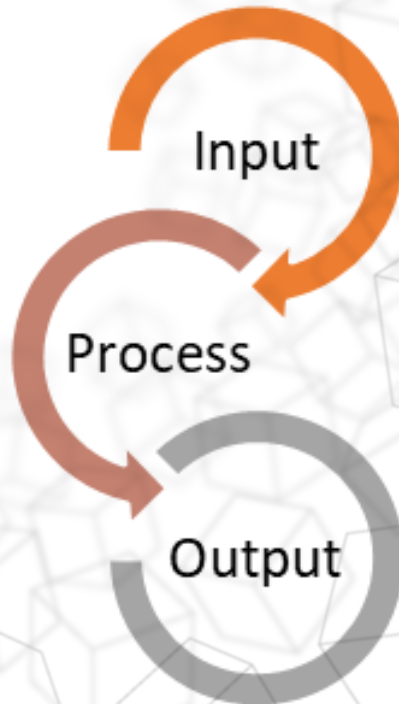
Step 2 Every Taskforce indicated Area(s) of Intervention of building blocks

Step 3 Described the prerequisites = INPUT

Step 4 Roadmap = PROCESS
"Preparing the meal with the ingredients"









Step 5 Described the outcome = OUTPUT

Step 6 Add examples of BestPractices





Building the building blocks

WP3-1	Writing Erasmus+ Design Measure		WP5-2	Lab Development	
WP3-2	Design measures for EMJM		WP5-3	Portal Design steps	
WP3-3	Joint Postgraduate Development		WP5-4	Audit process	
WP3-4	EMJM funding		WP5-5	Collaborative research template	




Play the Game – Unlock the Aoi

-  INNOVATION AND ENTREPRENEURSHIP (LOCKED)
-  LINKAGE TO SOCIETY (LOCKED)
-  RESEARCH (LOCKED)
-  SERVICES (LOCKED)
-  GOVERNANCE (LOCKED)
-  EDUCATION (LOCKED)



Explore the cube



Component
JOINT PROCUREMENT

Building Block

Joint procurement

Definition of procedures for joint procurement either services or equipment


INPUT >

- Technical Staff from each partner defines need and involved partners
- Agreement on common procedures for procurement based on example of best practices (IADT)
- Joint solutions or equipment needs identified

OUTPUT <

- Solution or equipment in place and being used across Alliance

Explore the cube



Component

CURRICULUM INNOVATION

Building Block

Harmonisation of Curriculum

How to harmonise curricula across alliance members

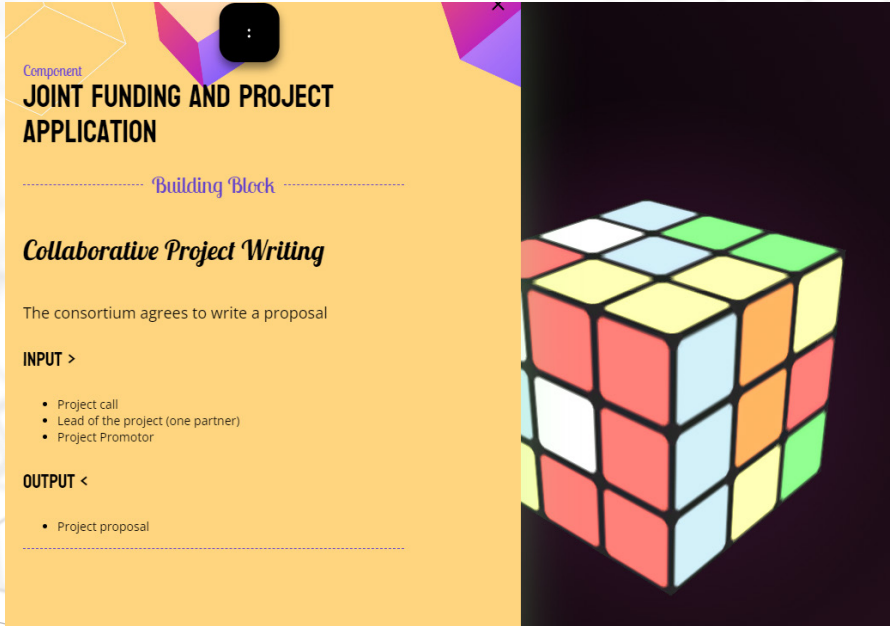
INPUT >

- Identify staff from across the alliance with requisite skillset
- Agreement on Alliance priorities for inclusion
- Full programme documentation

OUTPUT <

- Harmonised curriculum
- Mobility matrix for staff
- Mobility matrix for students
- Template for a harmonised curriculum for other domains
- Output of of harmonisation research for harmonised programme development

Explore the cube



Component

JOINT FUNDING AND PROJECT APPLICATION

----- Building Block -----

Collaborative Project Writing


The consortium agrees to write a proposal

INPUT >

- Project call
- Lead of the project (one partner)
- Project Promotor

OUTPUT <

- Project proposal



cube unlocked



All areas unlocked

TOOLKIT FULL ACCESS



UNIVERSIDADE
LUSÓFONA

LUCA
SCHOOL
OF
ARTS



INESCOP
NATIONAL INSTITUTE OF HIGHER
EDUCATION, TECHNICAL
EDUCATION AND VOCATIONAL
TRAINING

Institute of
Art, Design &
Technology
Dun Laoghaire



Explore

Randomly explore the cube by selecting a component



Unlock

Unlock the different areas of intervention



Roadmaps to the European University

Every component comes with a roadmap





Co-funded by the
Erasmus+ Programme
of the European Union